



DXB500DVR

DXB500DVR

QUICK START GUIDE

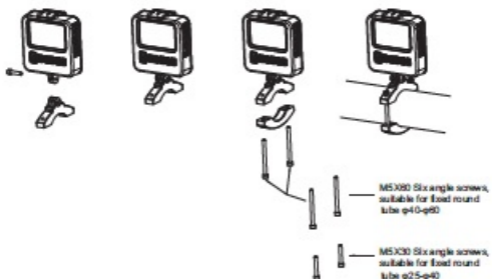
This Quick Start Guide gives you the basic information to start using your DXB500 DVR. Please call customer service at 1-844-NAVATLAS, 1-844-628-2852

NavAtlas™

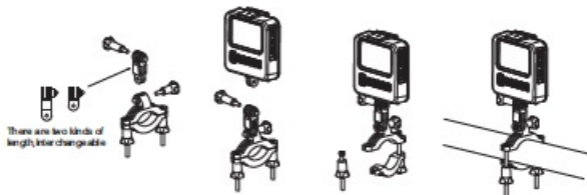
Customer Service Toll Free: 1-844-628-2852

Main Unit Installation

Installation 1:

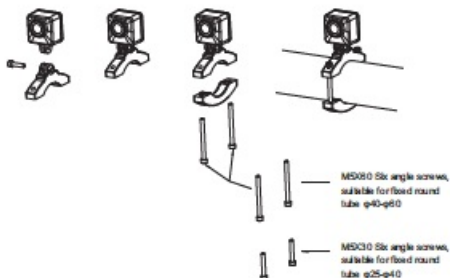


Installation 2:

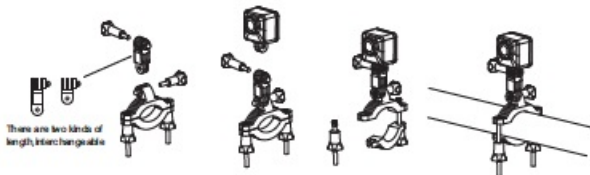


Camera Installation

Installation 1:

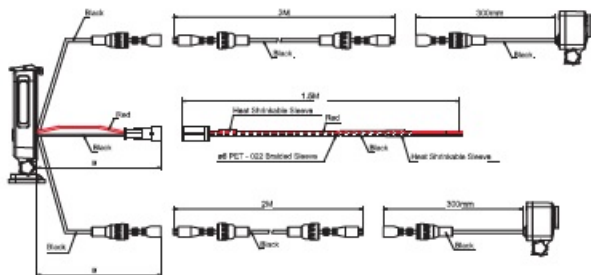


Installation 2:



NOTE: Using the interchangeable brackets, you can position the camera to suite any position.

Wiring Diagram - Inputs/Outputs



Product Specification

LCD: 2.7inch 960x240 RGB HD

2 WAY HD CAMERA

MCU: AMBA A7LA70+B5

SENSOR: IMX322

Camera lens: HJ5010

Video resolution: 1920x1080 30P 16:9 / 1280x720 30P 16:9

Compression format: H.264

Seamless loop recording

NOTE:

The recording time can be set to 1 min, 5 min, 10 min, or Continuous (Continuous recording will record for 30 min and auto save, then continue until the unit is stopped). Saved video files will show as 2 files (Front cam and rear cam) on the SD card.

MICRO SD CARD: Use only Class 10 or better SD card, lower quality cards will result in choppy playback and bad recording.

HDMI OUT: Supports an HDMI connection to an external monitor (Optional).

A/V OUTPUT: Supports an A/V RCA connection to an external monitor (Optional).

USB: USB connection is used to sync/transfer files from the SD card to PC.

WARNING: Do not connect USB cable while the unit is connected to 12V, damage to the unit may occur.

Indicator Description

Red light: power light, boot

Blue light: record light, flicker

Key Description



PLAY/STOP: Short press, start and stop recording



POWER: Short press will turn on the unit, long press will turn off the unit; while recording a short press will turn the screen on/off.



M: Short press will enter/exit Menu, long press will enable/disable MIC recording.



DOWN: Short press will move DOWN/LEFT in Menu, and decrease; Long press will switch screen view from split screen to front cam and back.



UP: Short press will move UP/RIGHT in Menu, and increase; Long press will switch screen view from split screen to rear cam.



S: Short press will confirm in Menu, Long press will switch to Playback mode.

RST

Reset: Short press reset button

Record Mode



Record Mode



Have insert TF card



Not insert TF card



Record loop over time(1min 5min 10min continue)



Record light flashing



Record time



Mic on



Mic off



Resolution



AE bias



Current time

Playback Mode

long press S enter the playback modes



Playback file list

Short press M can be set play mode (play one/ play all/repeat one /repeat all)

Short press M can be set delete file

Short press S play/pause, long press S return to the menu



MENU Instructions

Short press M Enter/ exit menu

Short press S to confirm

Press down up (move down/left and up/right)

Resolution

Set the video resolution

1920*1080P/1280*720P

Recording Time

Set the video time

1min/5min/10min/continue

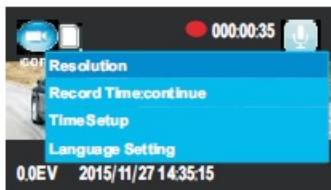
Time Setup

Can be set year/month/date/hours/
minutes

Language Setting

Set Language

Can be set English/Chinese/Traditional Chinese/Russian



WDR

Wide dynamic range

Can be set on/off

AE bias

Auto exposure setting

Anti flicker

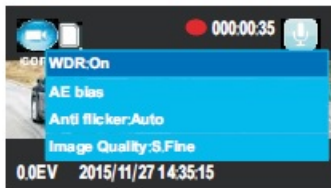
Set Anti flicker

Can be set Auto/60hz/50hz

Image Quality

Set the image quality

S.Fine/Fine/Normal



MENU Instructions

Meter Mode

Set Meter Mode

Can be set Center/Average/Spot

Output Dimension

Can be set Output Dimension

Can be displayed on the screen

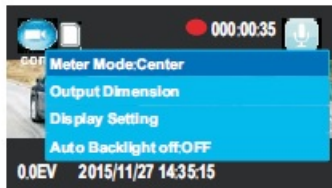
Front/Rear/Front+Rear

Display Setting

Can be set LCD brightness /contrast

Auto Backlight Off

Can be set auto backlight off /1min/3min/5min



Audio Volume Setting

Can be set Audio Volume output

Beep Sound

Can be set Beep Sound On/Off

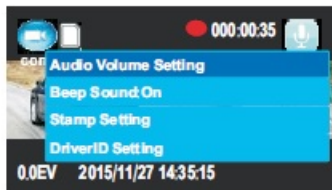
Stamp Setting

Set Stamp

Can be set Date/Time/Driver ID

DriverID Setting

Can set the driverID



Card Volume

Can display the TF card of capacity usage

Memory Format

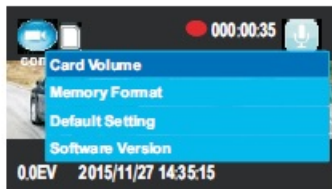
Erase the contents of the TF card

Default Setting

Restore the default settings

Software Version

Software version number



Copyright and Trademark Notes

This product incorporates copyright protection technology that is protected by method claims of certain U.S. patents and other intellectual property rights owned by Macrovision Corporation and other rights owners. Use of this copyright protection technology must be authorized by Macrovision Corporation, and is intended for home and other limited viewing uses only unless otherwise authorized by Macrovision Corporation. Reverse engineering or disassembly is prohibited. Manufactured under license from Dolby Laboratories. Dolby and the double-D symbol are trademarks of Dolby Laboratories. DVD Logo is a trademark of DVD Format/Logo Licensing Corporation registered in the U.S., Japan and other countries. SD Logo is a trademark of SD-3C, LLC. iPod and iPhone are trademarks of Apple Inc., registered in the U.S. and other countries. Dual Electronics Corporation is not affiliated with Apple, Inc. Other trademarks and trade names are those of their respective owners.

FCC STATEMENT

This device complies with Part 15 of the FCC Rules. Operation is subject to the following two conditions:

- (1) This device may not cause harmful interference, and
- (2) This device must accept any interference received, including interference that may cause undesired operation.

Warning :

Changes or modifications not expressly approved by the party responsible for compliance could void the user's authority to operate the equipment.

NOTE :

This equipment has been tested and found to comply with the limits for a Class B digital device, pursuant to Part 15 of the FCC Rules. These limits are designed to provide reasonable protection against harmful interference in a residential installation. This equipment generates uses and can radiate radio frequency energy and, if not installed and used in accordance with the instructions, may cause harmful interference to radio communications. However, there is no guarantee that interference will not occur in a particular installation. If this equipment does cause harmful interference to radio or television reception, which can be determined by turning the equipment off and on, the user is encouraged to try to correct the interference by one or more of the following measures:

- (1) Reorient or relocate the receiving antenna.
- (2) Increase the separation between the equipment and receiver.
- (3) Connect the equipment into an outlet on a circuit different from that to which the receiver is connected.
- (4) Consult the dealer or an experienced radio/TV technician for help.

FCC Radiation Exposure Statement

This equipment complies with FCC radiation exposure limits set forth for an uncontrolled environment. This equipment should be installed and operated with minimum distance 20cm between the radiator & your body.